

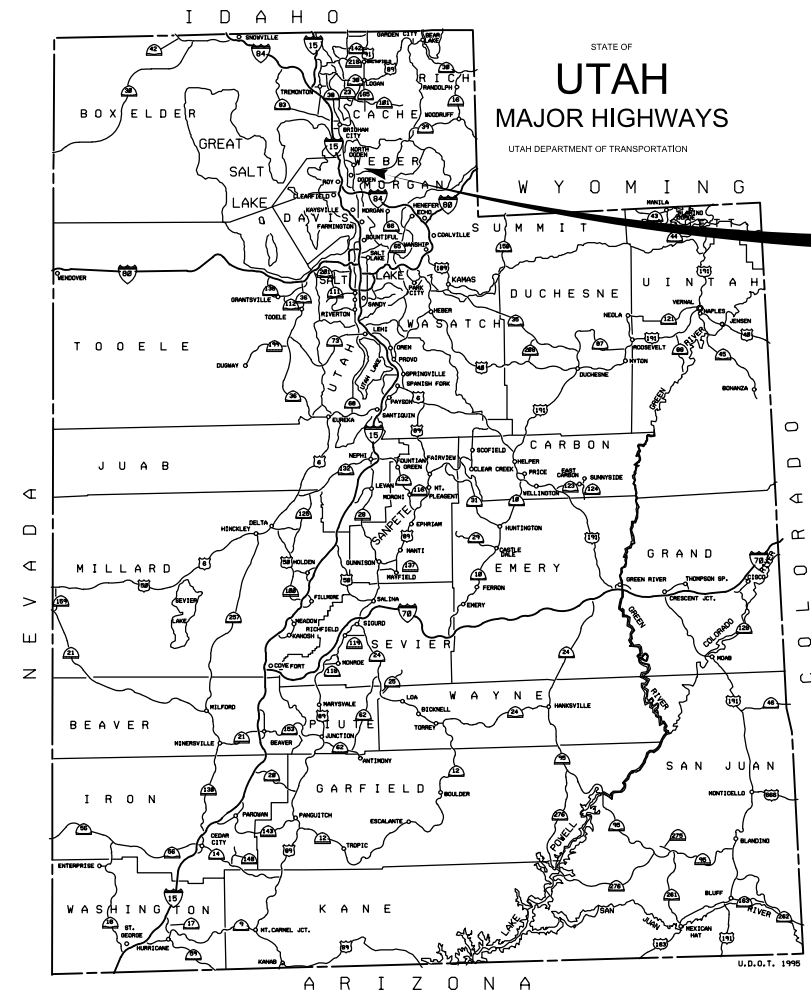
UTAH

DEPARTMENT OF TRANSPORTATION

SHEET NO.
1

U.S. Standard Units
(Inch-Pound Units)

ALL UNITS IN FEET UNLESS
OTHERWISE NOTED



S-R199(149)

PLANS OF PROPOSED PROJECT
STATE FUNDED

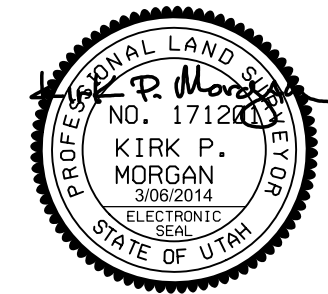
S-R199(149) PIN: 11765

SR-203(HARRISON) & 42ND, OGDEN

RIGHT OF WAY

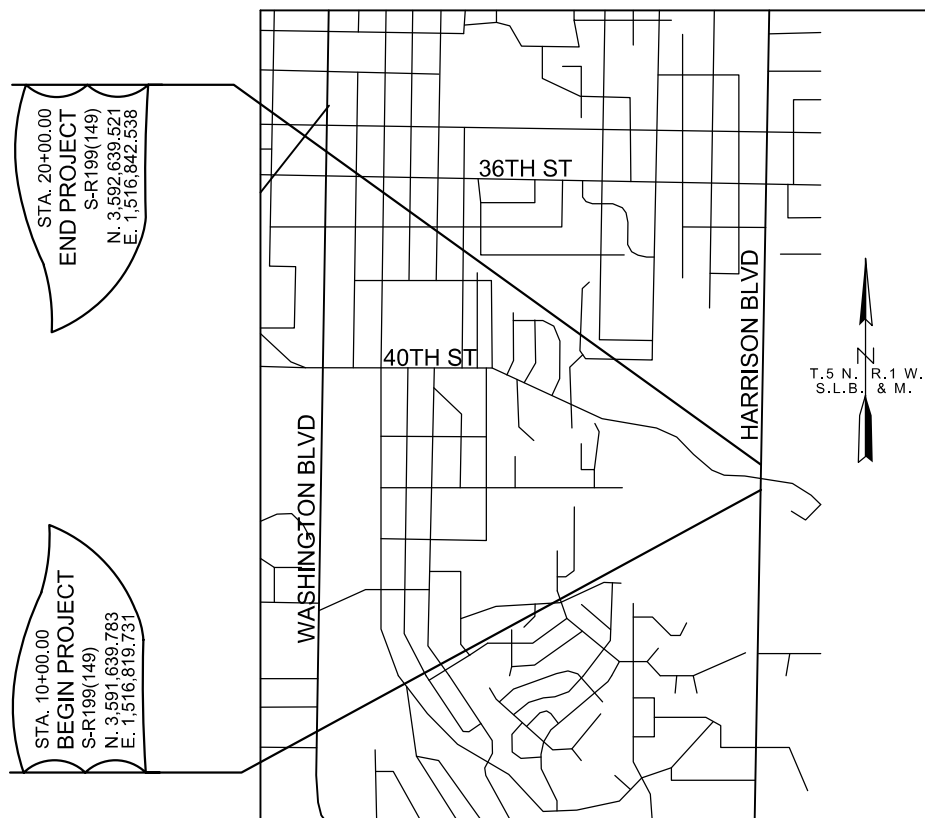
WEBER COUNTY

LENGTH 0.10 MILES



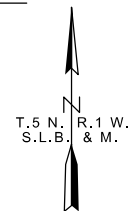
THIS SEAL APPLIES TO ALL SHEETS
CONTAINING THIS SIGNATURE

Kirk P. Morgan



STA. 20+00.00
END PROJECT
S-R199(149)
N. 3,592,639.521
E. 1,516,842.538

STA. 10+00.00
BEGIN PROJECT
S-R199(149)
N. 3,591,639.783
E. 1,516,819.731

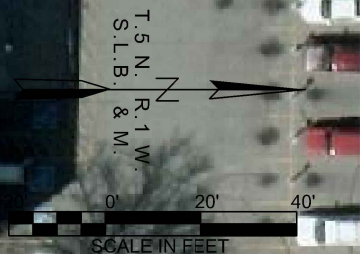


SHEET NO.	NO. OF SHEETS	DESCRIPTION
1	1	TITLE INDEX SHEET
SC-01	1	SURVEY CONTROL SHEET
RW-01	1	RIGHT OF WAY PLAN SHEET



NOTE:
COORDINATE VALUES SHOWN HEREON ARE
LOCAL "PROJECT" COORDINATE VALUES
EXPRESSED AT AVERAGE GROUND ELEVATION.
SEE SURVEY CONTROL SHEET FOR STATE
PLANE AND GEODETIC VALUES.

PARCEL NO.	OWNER	NET AC.	SQ. FEET	EXIST R/W AC. IN DEED	OWNERSHIP AC.	REMAINING AC. LEFT	RIGHT
R199: 101	FFPCH, LLC	0.004	176	NONE	13.654	13.650	NONE
R199: 102	NAISBITT INVESTMENT COMPANY LLC	0.001	52	NONE	1.0321	1.0320	1.0320
R199: 103	7-ELEVEN, INC.	0.003	139	NONE	0.523	0.520	0.520



REVISIONS

NO.	DATE	APPROVED BY	REMARKS
1	1/29/13	ER	VOID PARCEL 102

UTAH DEPARTMENT OF TRANSPORTATION
REGION 1
ESI ENGINEERING INC.

APPROVED: *Mark P. Morgan*
PROFESSIONAL LAND SURVEYOR

DATE: 4/23/14

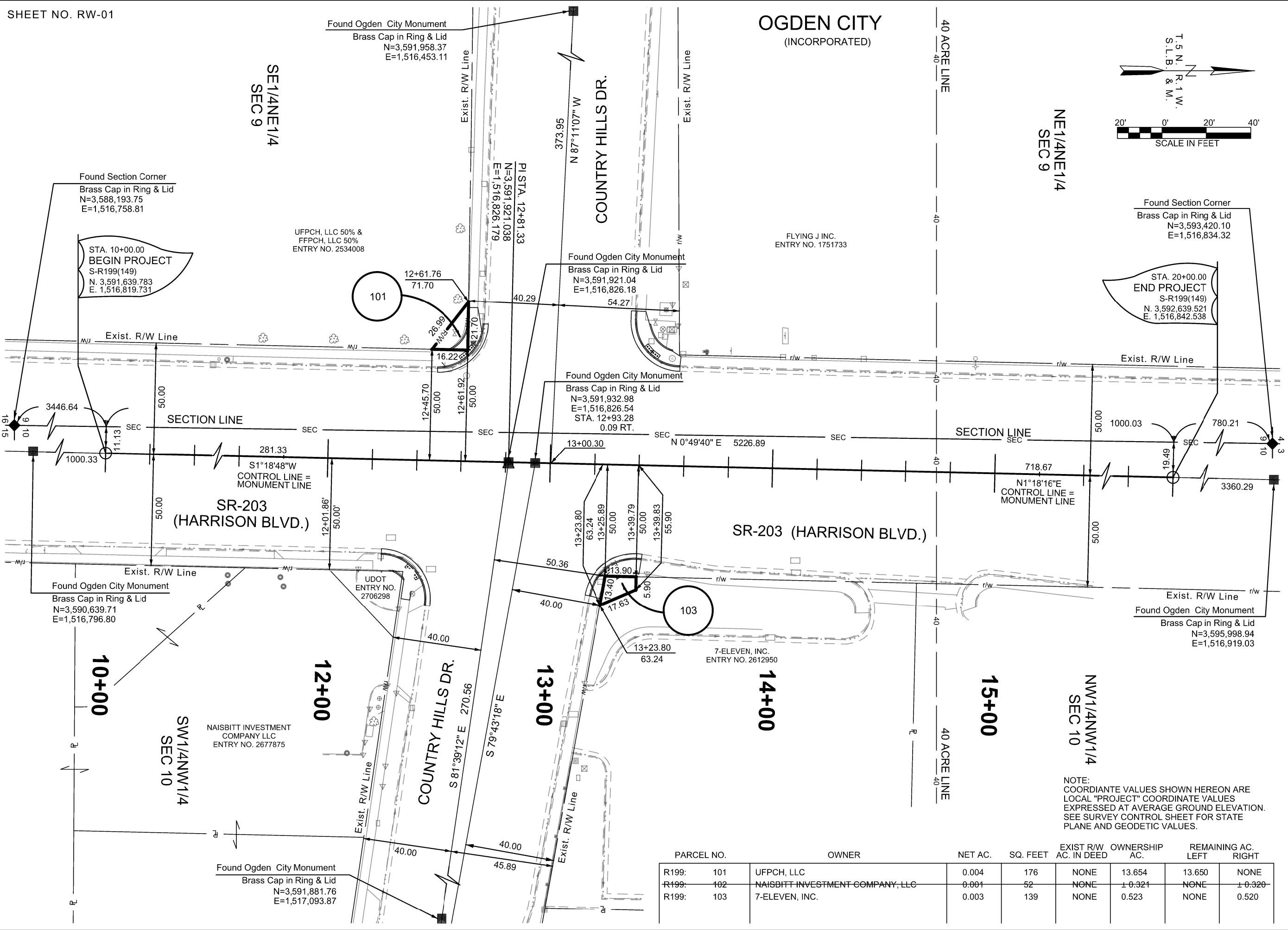
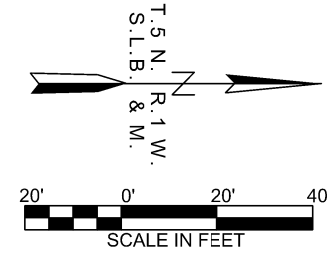
QC CHECKED BY: CRH
DRAWN BY: KPM

PROJECT	SR-203 (HARRISON BLVD.) & COUNTRY HILLS DR., OGDEN
PROJECT NUMBER	S-R199(149)
RIGHT OF WAY PLANS	
PIN	511766

SHEET NO. RW-01

2/26/2015 J:\116\SR-203 & 42005 OGDEN WTD 235\DELIVERABLES\11765-S-R199(149)_01\SR-FROM P\11765-S-R199(149)_RW-01.DGN

OGDEN CITY
(INCORPORATED)



NOTE:
COORDIANTE VALUES SHOWN HEREON ARE
LOCAL "PROJECT" COORDINATE VALUES
EXPRESSED AT AVERAGE GROUND ELEVATION.
SEE SURVEY CONTROL SHEET FOR STATE
PLANE AND GEODETIC VALUES.

PARCEL NO.	OWNER	NET AC.	SQ. FEET	EXIST R/W AC. IN DEED	OWNERSHIP AC.	REMAINING AC. LEFT	REMAINING AC. RIGHT
R199: 101	UFPCH, LLC	0.004	176	NONE	13.654	13.650	NONE
R199: 102	NAISBITT INVESTMENT COMPANY, LLC	0.001	52	NONE	1.0321	NONE	1.0320
R199: 103	7-ELEVEN, INC.	0.003	139	NONE	0.523	NONE	0.520

UTAH DEPARTMENT OF TRANSPORTATION
REGION 1
ESI ENGINEERING INC.

APPROVED: *Link P. Morgan*
PROFESSIONAL LAND SURVEYOR

DATE: 4/23/14

DRAWN BY: KPM
QC CHECKED BY: CRH

PROJECT: SR-203 (HARRISON BLVD.) & COUNTRY HILLS DR., OGDEN

PROJECT NUMBER: S-R199(149) (64)

RIGHT OF WAY PLANS

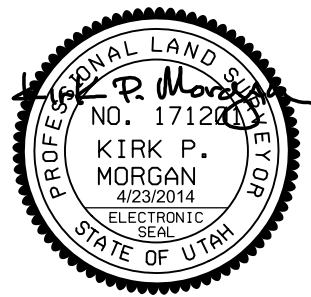
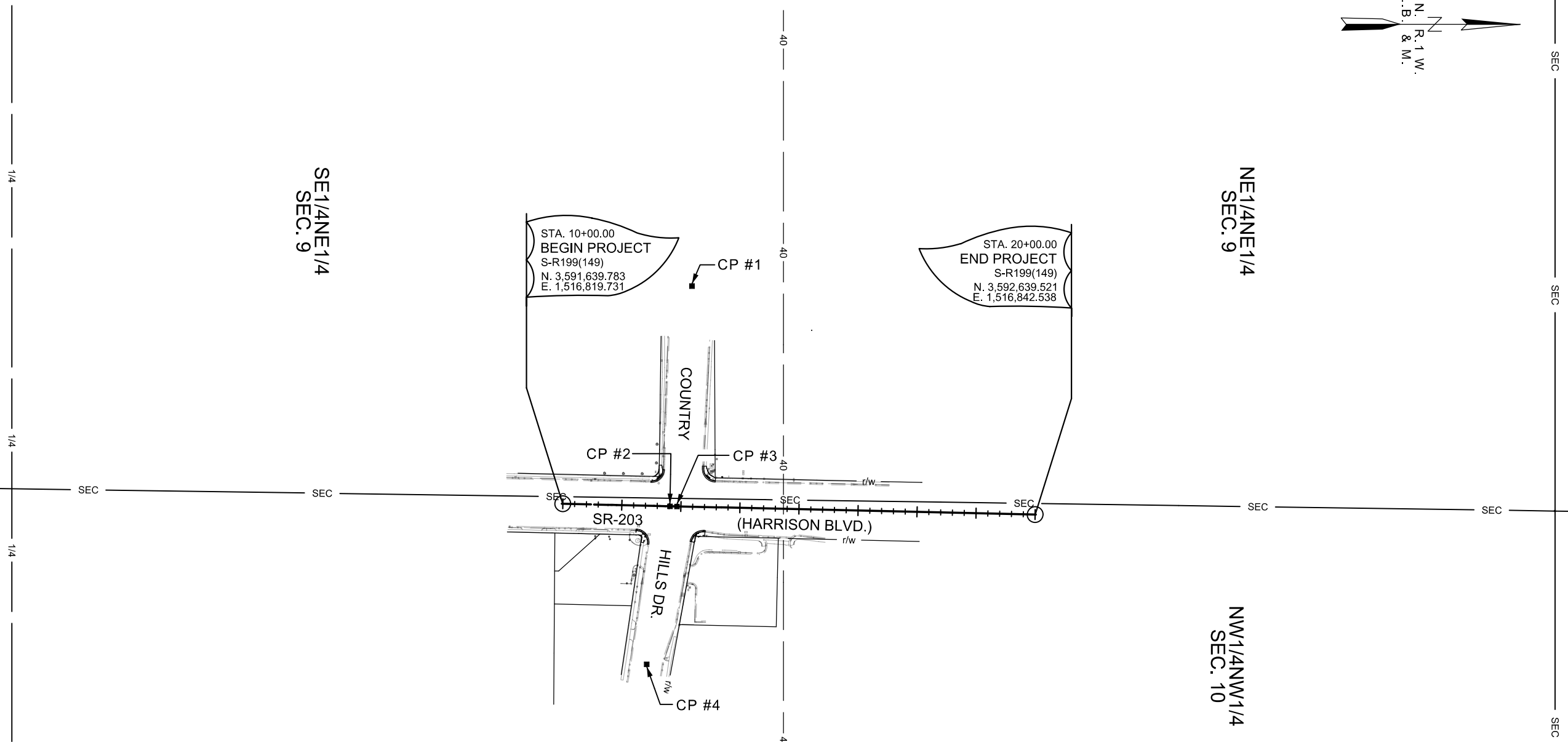
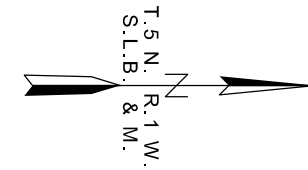
NO. 1 DATE 1/29/13 APPROVED BY: ER

VOID PARCEL 102

REVISIONS

SHEET NO. RW-01

2/6/2015 J:\13\116\SR-203 & 42005 OGDEN WTD 235\DELIVERABLES\11765-S-R199(149)_01.DWG FROM P:\11765-S-R199(149)_RW-01.DWG

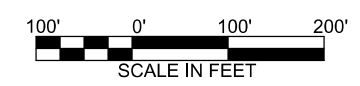


THE SURVEY CONTROL AND TOPOGRAPHICAL MAPPING FOR THIS PROJECT WAS DEVELOPED BY UDOT, REGION 1. ESI ENGINEERING WAS PROVIDED WITH CADD FILES OF THE MAPPING AND SURVEY DATA POINTS. FIELD VERIFICATION OF THE SURVEY CONTROL BY ESI ENGINEERING INDICATED THE HORIZONTAL DATUM OF THE UDOT CONTROL TO BE STATE PLANE COORDINATES, UTAH NORTH ZONE, N.A.D. 83, US SURVEY FEET. VERTICAL DATUM WAS CONFIRMED TO BE NAVD 88. IN ORDER TO RELATE A LOCAL COORDINATE SYSTEM TO THE EXISTING MAPPING, LOCAL COORDINATES WERE CALCULATED BY HOLDING THE COORDINATE VALUES OF CONTROL POINT 2 AND RECALCULATING THE VALUES FOR THE OTHER CONTROL POINTS USING THE UDOT BEARINGS AND THE GROUND DISTANCES MEASURED BY ESI ENGINEERING. GEODETIC COORDINATES SHOWN HEREON WERE DERIVED USING THE UTAH REFERENCE NETWORK T.U.R.N. GPS.

C.A.F.: 1.00026619

CONTROL POINTS / SR-203; (HARRISON BLVD.) & COUNTRY HILLS DR., OGDEN

MONUMENT #	PROJECT COORDINATES U.S. SURVEY FEET - NAVD 88			STATE PLANE UTAH NORTH ZONE NAD 83 U.S. SURVEY FEET		GEODETIC COORDINATES NAD 83			DESCRIPTION
	NORTHING	EASTING	ELEVATION	NORTHING	EASTING	LATITUDE	LONGITUDE	HEIGHT	
CP 1	3,591,958.37	1,516,453.11	4,678.36	3,591,958.36	1,516,453.21	41°11'11.05679"N	111°57'01.37085"W	4,624.01	OGDEN CITY BRASS CAP MONUMENT
CP 2	3,591,921.04	1,516,826.18	4,701.17	3,591,921.04	1,516,826.18	41°11'10.70710"N	111°56'56.49015"W	4,646.84	OGDEN CITY BRASS CAP MONUMENT
CP 3	3,591,932.98	1,516,826.54	4,700.67	3,591,932.98	1,516,826.54	41°11'10.82508"N	111°56'56.48621"W	4,646.34	OGDEN CITY BRASS CAP MONUMENT
CP 4	3,591,881.76	1,517,093.87	4,714.46	3,591,881.74	1,517,093.79	41°11'10.33246"N	111°56'52.98744"W	4,660.15	OGDEN CITY BRASS CAP MONUMENT



UTAH DEPARTMENT OF TRANSPORTATION REGION 1 ESI ENGINEERING INC.		APPROVED	DATE
DRAWN BY KPM		QC CHECKED BY	DATE
NO. DATE APPROVED BY		REMARKS	
SR-203 (HARRISON BLVD) & COUNTRY HILLS DR, OGDEN		APPROVED <i>Kirk P. Morgan</i> PROFESSIONAL LAND SURVEYOR	
PROJECT NUMBER	S-R199(149)	PIN	11765
SURVEY CONTROL SHEET			
SHEET NO.		SC-01	

4/24/2014 J:\13-116\SR-203 & 42005 OGDEN WTD 235\SUBSTATION\1765-S-R199(149)_01F_SC-01.DGN